



Nationwide Land Parcel Data from Loveland Technologies

143 million land parcels covering 95% of US residents



LOVELAND
- TECHNOLOGIES -

landgrid.com



About Loveland Technologies and Landgrid.com

Loveland Technologies is a nationwide property mapping and data company dedicated to mapping America's land grid at the parcel level.

We started out mapping blight and tax foreclosure in Detroit, Michigan and realized how fundamental parcel data is to communities across the country.

Our customers work with the data on landgrid.com or license it for use in their own maps, apps, and databases.

We are based in Detroit with colleagues and collaborators in cities across the country.



About the dataset

Land parcels are a fundamental feature of the American landscape that define the legal boundaries of all properties. All homes, businesses, and points of interest are bounded by a parcel.

Our nationwide land parcel dataset contains more than 143 million parcel geometries and assessment information covering 95% of US residents.

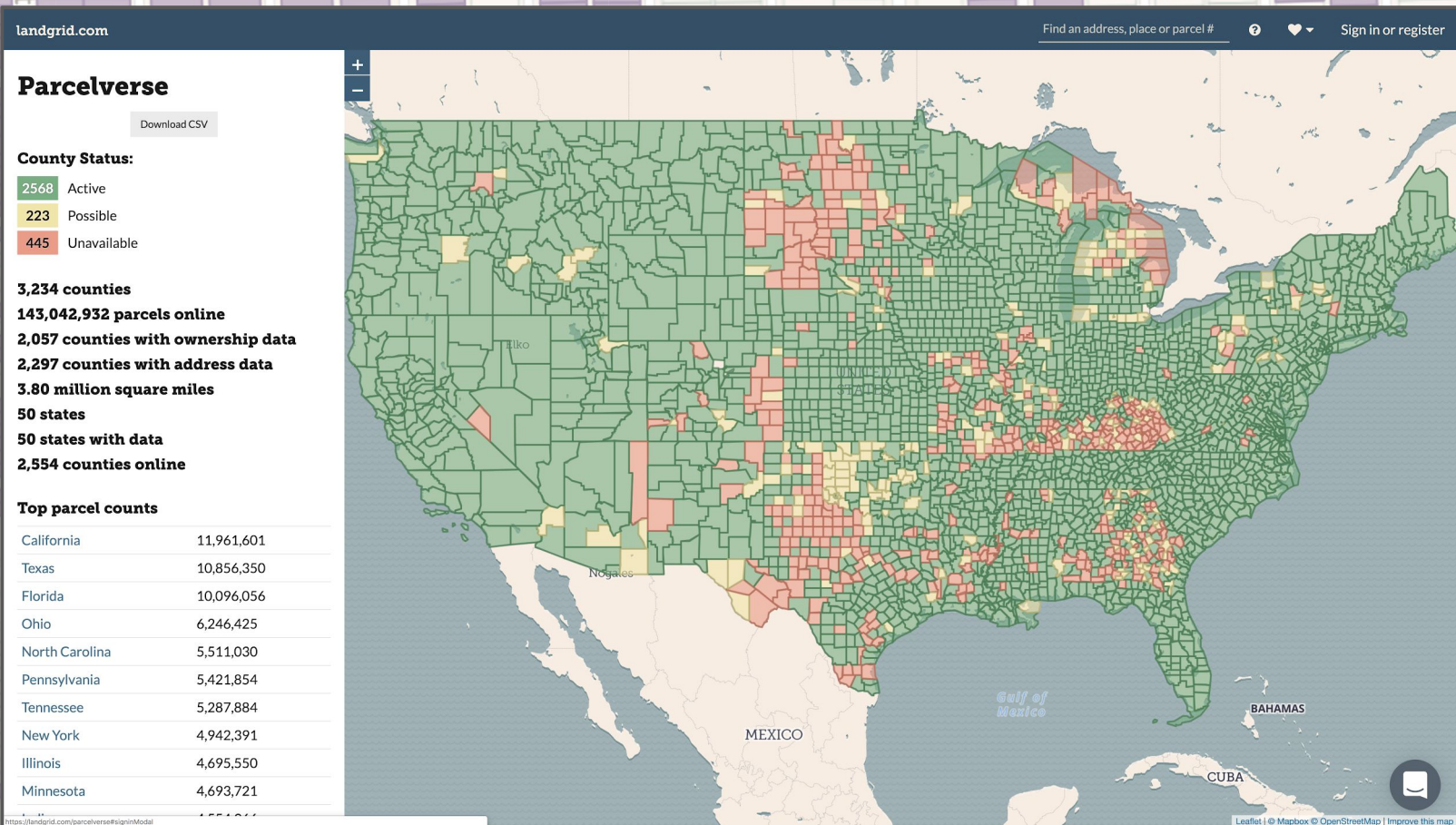
The data is typically collected at the county level and comes with property geometry, parcel ID, address, size, ownership and a range of attributes that vary from country to county.

We put this data into our own standardized schema of 94 fields [which you can see here](#), filling in everything we possibly can.

We update the data automatically where possible, and on a rotating basis otherwise. We seek to keep the data updated within the last year, and are always adding more.

The data is delivered via API or bulk download with as many refreshes as you'd like.

Visit landgrid.com/parcelverse for an interactive map of our coverage.



Customer Domains

Parcel data is a foundational dataset that adds important context to other location data.

Customers license our data for a wide variety of applications. Here are some of the uses we've seen:

- Machine Learning
- GIS Software
- Geocoding
- Geofencing Content
- Marketing
- Energy
- Infrastructure
- Insurance
- Disaster Relief
- Climate Modeling
- Site Selection
- Real Estate
- Political Canvassing
- Property Assessment
- Conservation
- Agriculture
- Banking
- Sanitation
- Utilities
- Forestry
- Hunting & Recreation

Customer Case Study: Mapbox



[Mapbox](#) is a location data platform for mobile and web applications. The company provides building blocks to add location features like maps, search, and navigation into any experience you create.

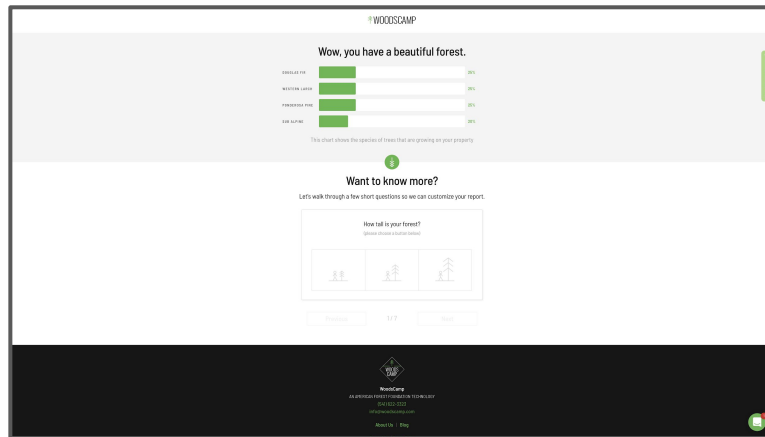
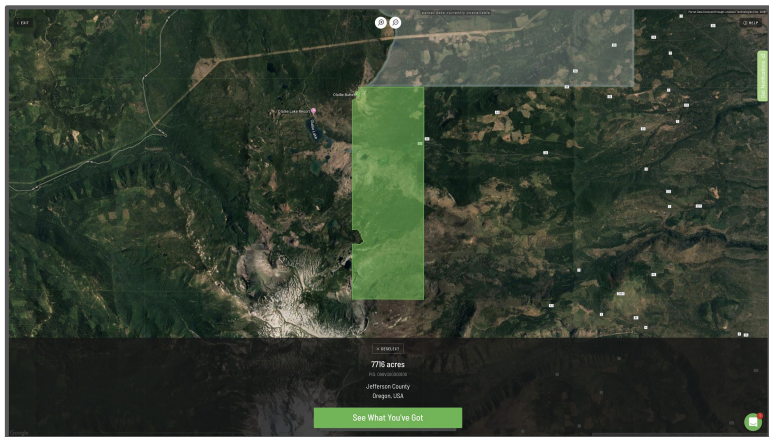
"With Loveland, we found just the kind of nationwide parcel dataset that we were looking for to support robust enterprise-level geocoding. The coverage they offer is among the most comprehensive that we have seen, and their flexible license makes the data a natural addition to our high-accuracy data-driven services."

— Karen Ellenberger, Mapbox

Customer Case Study: WoodsCamp

[WoodsCamp](#) – a technology of the American Forest Foundation – uses Loveland's parcel data to help owners of private woodland understand what trees are on their land and how to care for it.

We love this project because it presents users with a simple, parcel-driven interface that cleverly identifies what mix of trees are on the parcel and generates a customized report just for them.





For questions and data samples email parcels@landgrid.com.

Thank you very much. We look forward to working together.

- The Loveland Technologies and landgrid.com team



LOVELAND
- TECHNOLOGIES -

landgrid.com